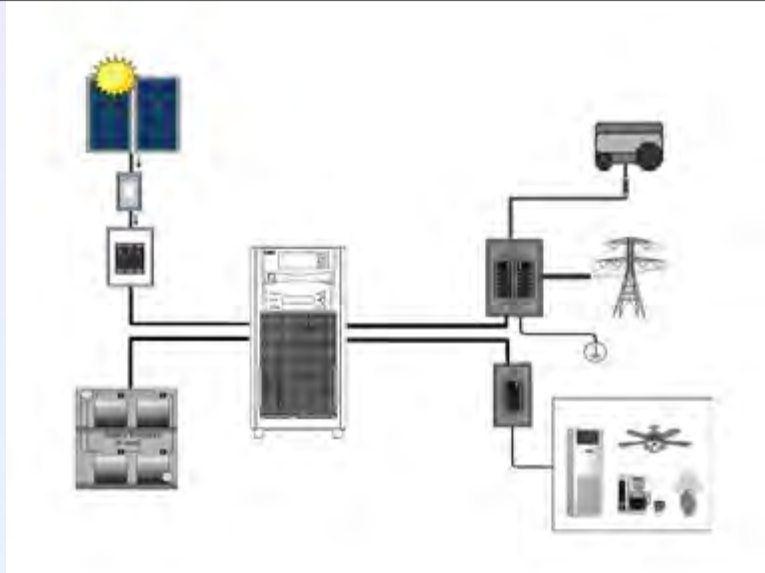


SOLAR HYBRID INVERTER



OPERATION MODE:

- I) Line-PV or Solar-PV mode
- II) Line-Hybrid or Solar-Hybrid mode
- III) Line mode
- IV) Inverter-PV mode
- V) Inverter-Hybrid mode
- VI) Inverter mode
- VII) Charging mode



TECHNICAL SPECIFICATION

DC Input (PV Tracker)

Max. Input DC Power	4500W
Initial Feed-in Voltage	160Vdc
Working Voltage Range Full Rating Voltage Range	130 ~ 300Vdc
Max. DC Current	185 ~ 300Vdc
Max. DC Short-circuit Current	24.3A
	30.4A

AC Input / Output (Line Mode)

Input Voltage Waveform	Sinusoidal (utility or generator)
Nominal Input Voltage	230Vac
Low Line Disconnect	170Vac±4% (normal range) 90Vac±4% (generator / wide range)
Low Line Re-connect	180Vac±4% (Normal) 100Vac±4% (generator / wide range)
High Line Disconnect	280Vac±4%
High Line Re-connect	270Vac±4%
Max AC Input Voltage	300Vac rms
Nominal Input Frequency	50Hz / 60Hz (auto detection)
Low Line Frequency Disconnect	40±1Hz
Low Line Frequency Re-connect	42±1Hz
High Line Frequency Disconnect	65±1Hz
High Line Frequency Re-connect	63±1Hz
Output Voltage Waveform	As same as input waveform
Output Short-Circuit Protection	Circuit Breaker 40A
Efficiency (Line Mode)	>95% (Rated R load, battery full-charged)
Transfer Switch Rating	40A
Transfer Time	10ms (typical) 15ms max(Normal range setting)
(AC to DC)	20ms (typical) 40ms max(generator/wide range setting)
Transfer Time	10ms (typical) 15ms max(Normal range setting)
(DC to AC)	20ms (typical) 40ms max(generator/wide range setting)

AC Output (Inverter Mode)

Output Voltage Waveform	Pure Sine Wave
Nominal Output Power	5000VA
Power Factor	0.84
Nominal Output Voltage	230Vac
Output Frequency	50Hz / 60Hz \pm 1Hz (automatic detection)
Output Voltage Regulation	\pm 10% rms
Max. Efficiency (DC to AC)	>95%
Over-Loading Protection	fault after 5s@ \geq 150% load fault after 10s@110%~150% load
Surge Rating	10,000VA
Electric Motor Start-up Capability Output	2.5HP
Short-Circuit Protection	Current limit (Fault after max. 4 cycles)
Rating of Bypass Circuit Breaker	40A
Nominal DC Input Voltage	48V
Min DC Start-up voltage	40V
Low DC Alarm	42.0 \pm 1.2Vdc
Low DC Alarm Recovery	43.2 \pm 1.2Vdc
Low DC Shut-down	40.0 \pm 1.2Vdc
Low DC Shut-down Recovery *	44.0 \pm 1.2Vdc
High DC Shut-down	60.0 \pm 1.2Vdc
High DC Shut-down Recovery	58.0 \pm 1.2Vdc
Power saver setting	0W (Set saver "OFF" at LCD) 5 \pm 2W enter 10 \pm 5W leave (Set saver "ON" at LCD)
Tare loss(nominal)	Saver OFF:<80W Saver ON:<30W
DC component of output	<100mV
Half-wave load detection	Yes (when unbalanced current >35A)

Battery Charger

Nominal Input Voltage	230Vac
Input Voltage Range	180V~ 270Vac (normal range) 100V~ 270Vac (generator / wide range)
Nominal Output Voltage	Subject to the battery type 20A (95-175V) for generator / wide range 35A (175-275V) @35A setting
Nominal Charge Current	20A (175-275V) @20A setting
Charge Current Tolerance	\pm 10%
Start-up Battery Voltage	>35Vdc
Charger Short-Circuit Protection	Shutdown automatically
Over-Charging Protection	Bat. V \geq 60Vdc, Fault, Buzzer alarm
Charge Algorithm	Three charging stages: Boost CC (constant current stage) → Boost CV (constant voltage stage) → Floating (constant voltage stage)
	Battery Type Setting (\pm 0.3v/bat) Charger current (+/-10%)



SITECNO, S.A.

C/ Balmes 1-3, Zona Industrial,
Sta. M. Palautordera, 08460 Barcelona, SPAIN

P: +34 938482544

F: +34 938480439

E: info@sitecno.eu

www.sitecno.eu